



### Alfundão Bridge

When strolling through the streets of black *calçada* cobblestones in Alfundão, you come to a small stone bridge that stretches over the stream. Nearby, you can find short stretches of Roman road that are very probably the remains of a road that led from Torrão through Odivelas, with a connection to Alfundão, and continued from there to Beringel and Beja.



### Olive oil from Alfundão

The olive press in Alfundão is the oldest in the municipality and the only one to be located within a town or village. It produces olive oil from *galega* olives grown exclusively in the region's traditional olive groves, producing approximately 1,000 to 1,500 tonnes of olives per year. With a distinctive aroma, the oil can be purchased at the olive press or in local shops.

### Eat here!

Meals and snacks are very appealing in Ferreira do Alentejo. You can have lunch or dinner in a restaurant or have a snack in a tavern or in one of the cafés in the traditional Alentejo style that can be found in the municipality.



### Lake of Ducks

Located on the boundary between the municipalities of Ferreira and Alvito, this reservoir, which is used to store water for irrigating agricultural fields, is one of the best places in the Alentejo to observe ducks and other aquatic birds such as herons, spoonbills and flamingos. Large flocks of great cormorants can frequently be seen here too.



### Church of Our Lady of the Conception

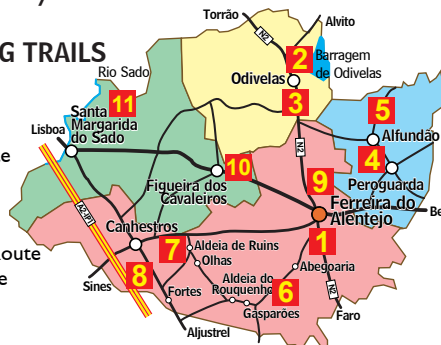
The church stands in a square and documents show that it was originally built in the 16th century, probably on the site where a Visigoth church of medieval origin stood; all that remains of the earlier church is a carved stone with crosses of the Templars on the side. Our Lady of the Conception, the patron saint of Portugal and the heiress of ancestral female cults, is venerated here.

The municipality of Ferreira do Alentejo is located in the Lower Alentejo, exactly halfway between the Atlantic coast and the border with Spain. With an area of 648.25 km<sup>2</sup> and a population of 7,850, the municipality has a strong focus on agriculture, in the form of both traditional cultivation of olive trees and the cork oak forests of the montado, and modern cultivation using irrigation. There are traces of occupation by humans since the Middle Palaeolithic, with the region being used throughout all the periods of pre-history and history.



### PR - SHORT WALKING TRAILS

- PR1 Eagle Hill Route
- PR2 Water Route
- PR3 Stone Route
- PR4 Michel Giacometti Route
- PR5 Lake of Ducks Route
- PR6 "Montes" Route
- PR7 Old Villages Route
- PR8 Cork Oak "Montado" Route
- PR9 Farms and Estates Route
- PR10 Olive Oil Route
- PR11 Sado River Route



### CONDUCT AND SAFETY

This trail is reserved for walkers only. Walk in a group; avoid going alone. Wear a hat and suitable clothing and footwear for your intended walk. Take a backpack with plenty of food and water. Be respectful of public and private property. Leave gates and barriers the way you found them. Avoid using plastic items and dispose of rubbish in the proper places. No naked flames or lighting fires of any kind. Make use of local services for overnight stays, meals and shopping.



Ferreira do Alentejo Municipal Council

Tel +351 284 738 700

geral@cm-ferreira-alentejo.pt



PR 5  
FAL

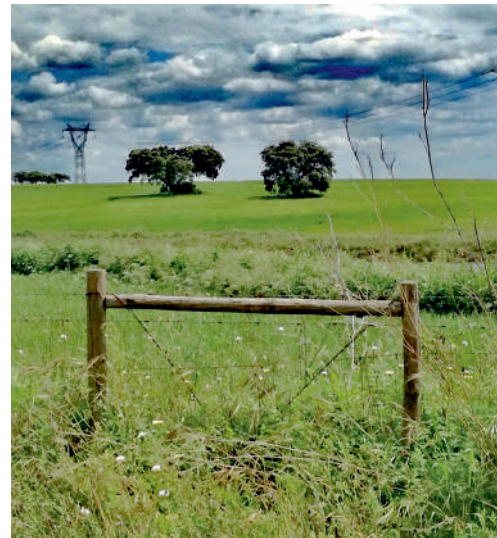
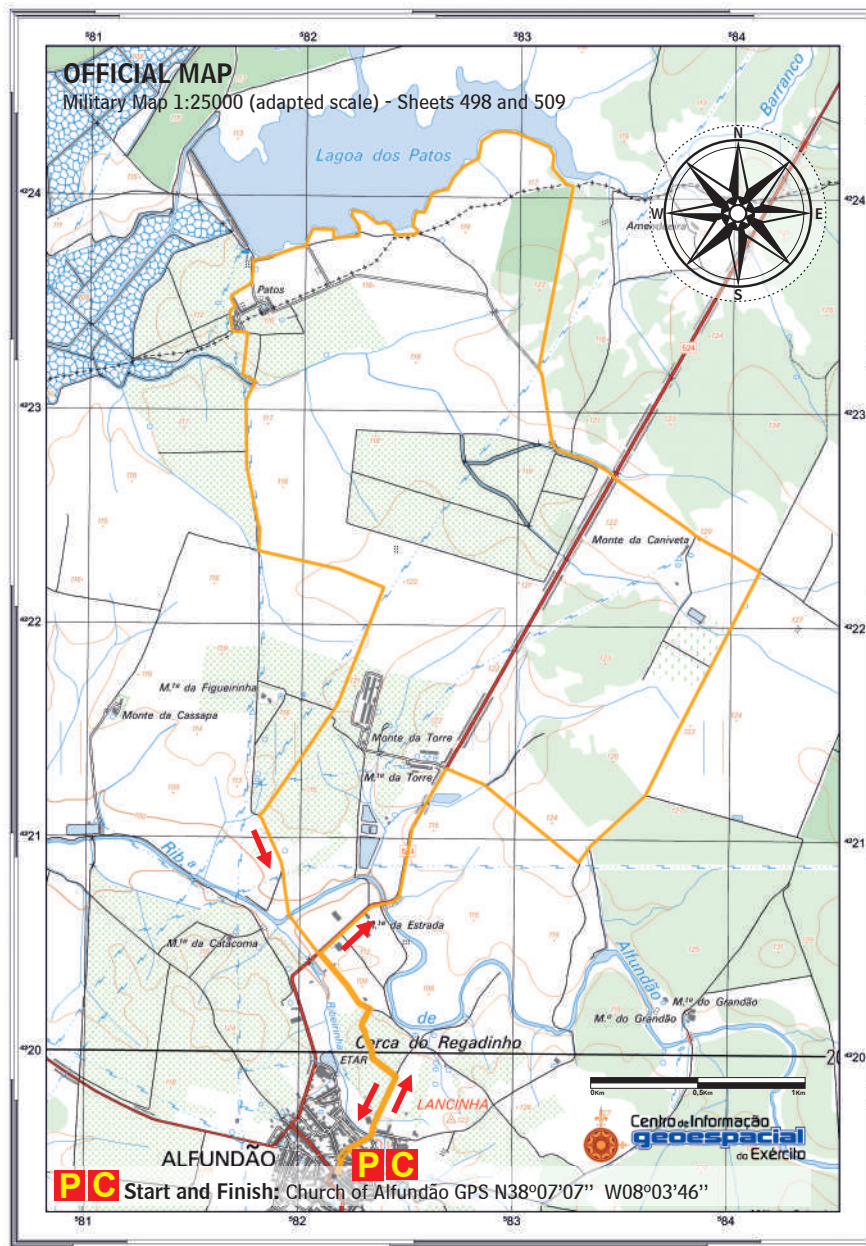


LAKE OF DUCKS  
ROUTE  
Walking Trails of  
FERREIRA DO ALENTEJO . PORTUGAL





On the boundary between the municipalities of Ferreira do Alentejo and Alvaro stands the Herdade dos Patos, an estate that includes a stretch of water created by the consolidation of reservoirs used for irrigation. The natural conditions produced by this reservoir in combination with good temperatures, the availability of food and favourable areas for protection, have created one of the most important sanctuaries for aquatic birds in the whole of the Alentejo. Its name, Lagoa dos Patos (Lake of Ducks), comes from the important colony of ducks that co-exist with a long list of other birds and many animals that are typical of wetland areas.

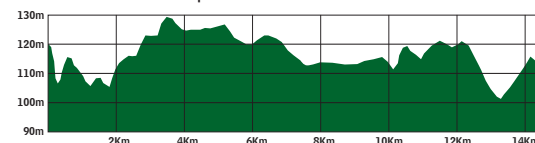


### POINTS OF INTEREST

Village of Alfundão  
Church of Alfundão  
Alfundão bridge  
Lake of Ducks  
Olive grove  
Almond grove  
Olive oil from Alfundão

### ALTITUDE GRAPH

Check the relationship between distance and altitude scales.



### DATA SHEET

Trail: Loop with common initial section.  
Distance: 14,9 km.  
Accumulated elev.: 170 m.  
Duration: 4 to 5 hours.

Difficulty: Medium.  
Surface: Country paths.  
Season: All year.  
Muddy places in the rainy season.

### DESCRIPTION OF THE TRAIL

This is a circular trail in the shape of a lasso, with a repeated stretch at the beginning and the end connecting to the starting point in Alfundão next to the main church. Leave Alfundão along Rua da Igreja and Rua das Fontainhas. Cross the stream; follow the dirt track that starts between agricultural warehouses as far as the turning to the left along the rural track that leads to the tarred road, and then turn left. At the crossroads, turn right and continue for about a kilometre along the tarred road and turn right at the crossroads at the Herdade da Torre estate. Follow the rural tracks in accordance with the signs, cross the road and continue along the tracks leading to the upper part of the Lagoa dos Patos reservoir. Walk along the left bank of the reservoir, to the south of the water as far as the dam wall. Near the reservoir, you will see the many aquatic birds that feed, live and nest here; please respect the natural balance with the utmost responsibility and safety. Head south, going around the agricultural buildings to the right and crossing the olive plantation. Cross the water course and keep walking alongside the almond plantation, and turn left where these trees come to an end. Walk around the field of olive trees until you reach the road again, which must be crossed with great care, and return along the stretch of track that you followed at the start of the trail.



### SIGNAGE



### EMERGENCY

Emergency 112  
Fire Alert 117  
Environment 808 200 520  
GNR SEPNA sepna@gnr.pt