

POINTS OF INTEREST



The Village of Odivelas

The history of the village certainly dates back to the Roman period, having been a crossing point for the imperial road connecting Beja to Alcácer do Sal as early as the second century. With about 500 inhabitants, it has the particularity of being situated on a hill that rises above the surrounding countryside, creating a natural viewpoint over the vast plain and standing watch over the Odivelas Stream.



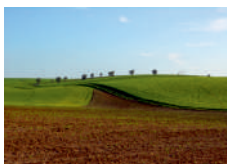
Traditional Olive Grove

By traditional olive groves, we mean extensive plantations of olive trees that have often been cultivated for hundreds of years, and where ancient cultivation and olive harvesting practices are still used. These olives are always of superior quality and, after being crushed in the mills, they give rise to fine olive oils, often with very different characteristics in terms of aromas and taste.



Odivelas Quarry

In an elevated area, you will find the hill known as "Serra de Odivelas", created by a rocky mass of gabbro which pushed its way through the Earth's crust. Referred to as "Odivelas black granite", this igneous rock was formed by the slow cooling of basaltic magma deep below the surface over 300 million years ago. In the past, it was mined for ornamental purposes but this is no longer the case today.



Croplands

The fertile plains, irrigated sometimes by water from the Odivelas Reservoir and sometimes from the Alqueva Reservoir, are today extensive croplands where hundreds of hectares of orange, almond and olive groves stand out. Vast cereal fields where livestock fodder is grown, as well as extensive grazing land can also be seen.



Cork Oak and Holm Oak

A man-made ecosystem characteristic of the Alentejo, these cork and holm oak forests are very delicately balanced. Cork oaks are robust trees and their bark – the cork – has enormous commercial value. Holm oaks produce acorns of excellent flavour that serve as an important food for cattle and are also used as firewood for charcoal production.



New Well and Wash House

The enhancement of people's living conditions has always involved good hygiene and access to water, both for drinking and for washing. The construction of a modern well with a pumping system and a public wash house brought a huge improvement to the quality of life of the population of Odivelas. Although it has little practical use nowadays, the place still keeps the historical memory alive.



Odivelas Baskets

The Odivelas Stream and the extensive flooded areas around it give rise to the abundant growth of reeds that the artisans harvest in the traditional manner using the skills handed down to them from generations past. The reeds are then dried, dyed and artfully woven to create the highly original Odivelas Straw Baskets. Handy for day-to-day use as shopping or picnic baskets, they are today considered cultural heritage and a local craft with enormous value on a national scale.

Eat here!

Meals and snacks are very appealing in Odivelas. You can have lunch or dinner in a restaurant or have a snack in one of the several Alentejo cafes that exist in the centre of the village. In addition to savouring the food, you will experience the way of life of the people of Odivelas, especially in the late afternoon when everyone is in fine spirits and they all get together to enjoy a good glass of wine. Be adventurous and come and get acquainted with Odivelas, using your feet and your taste buds!



HOW TO GET HERE

The municipality of **Ferreira do Alentejo** is located in the Baixo Alentejo region, precisely halfway between the Atlantic coast and the border with Spain. The county seat, Vila de Ferreira do Alentejo, is 24km from Beja (~ 20 minutes) on the national road IP8.

From the North

Take the A1 as far as Santarém, cross the Tagus River at Ponte das Lezírias and take the A13 as far as Marateca. Take the A2 as far as the Grândola Sul exit and then take the A26 or IP8.

From Lisbon

Cross the Tagus River on the Vasco da Gama Bridge and take the A12. Alternatively, cross the 25th of April Bridge and take the A2 as far as the Grândola Sul exit and take the A26 or IP8.

From the South

Take the A2 as far as the Castro Verde exit, then take the IP2 to Castro Verde and finally by the legendary Estrada Nacional EN2, passing through Aljustrel.

From Évora

Take the EN254 national road towards Viana do Alentejo and then the EN258 national road towards Alvão. Finally by the legendary Estrada Nacional EN2, which passes through Odivelas, already in Ferreira do Alentejo territory.

From Spain

Cross the border at Rosal de la Frontera / Vila Verde de Ficalho and take the IP8, passing through Serpa and Beja until reaching Ferreira do Alentejo.

Public Transport to Ferreira do Alentejo

Bus: www.rede-expressos.pt or www.rodalentejo.pt

Train: www.cp.pt Stations: Beja (24km), Cuba (23km), Ermidas (28km)

Taxi: Near the bus station



FERREIRA DO ALENTEJO WALKING TRAILS

Welcome to **Ferreira do Alentejo**, where you will find a well-structured network of 11 walking routes, distributed throughout the territory, and have access to the different rural and natural landscapes and the historical and cultural heritage.

Choose to stay in Ferreira do Alentejo and discover the secrets of its gastronomy, arts and local knowledge.

PR - SHORT ROUTES

- PR1 Rota do Cerro da Águia
- PR2 Rota da Águia
- PR3 Rota da Pedra
- PR4 Rota Michel Giacometti
- PR5 Rota da Lagoa dos Patos
- PR6 Rota dos Montes
- PR7 Rota das Aldeias
- PR8 Rota do Montado
- PR9 Rota das Quintas e Herdades
- PR10 Rota do Azeite
- PR11 Rota do Rio Sado



INITIATIVE OF



Odivelas Civil Parish Council
Tel +351 284 763 137 freguesiaodivelas@hotmail.com



Ferreira do Alentejo Municipal Council
Tel +351 284 738 700 geral@cm-ferreira-alentejo.pt

PROJECT



www.sal.pt

MAPS



REGISTRATION APPROVAL



www.ferreiradoalentejo.pt

FINANCING



**PR 3
FAL**

STONE ROUTE
Percursos Pedestres
Walking Trails

FERREIRA DO ALENTEJO . PORTUGAL



www.ferreiradoalentejo.pt

www.ferreiradoalentejo.pt

PR 3
FAL

STONE ROUTE

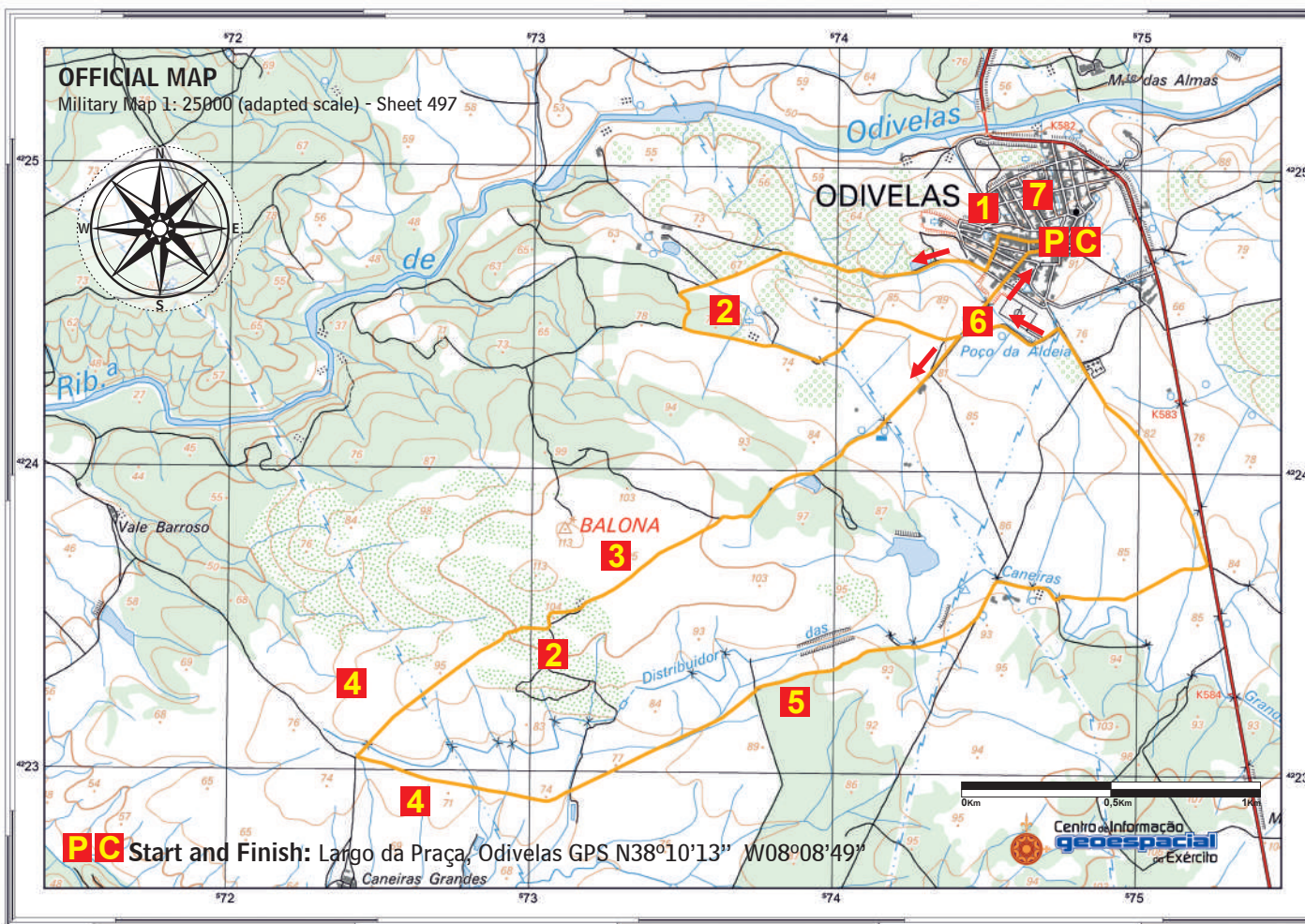
Percursos Pedestres



FERREIRA DO ALENTEJO . PORTUGAL

9.9 km
Loop
3 to 3.5 hours
●●○○○

These are the great plains that once glowed in the sun with a golden mantle of cereals, dotted with centenary olive groves and scattered holm oaks. Nowadays, the landscapes are becoming greener with the successive advances in irrigation and you will see the new hedgerow olive groves, as well as orange orchards and almond trees. At the top of the hill, the village of Odivelas stands watch over all these fields and the stream named after it that has always been the reason for the inhabitants of this territory settling here.



DESCRIPTION OF THE TRAIL

Leave Largo da Praça along Rua do Arrabalde and take the second street on the left, Rua Nova, going all the way to the end, where you turn right. Now continue through the countryside, pass by a biological water treatment plant and continue through the extensive farmlands with traditional old olive groves. Bear left at the fork and when the path bends to the right, follow the trail on the left, go around the copse of trees and some blocks of stones until you find a new country path along the open field and keep left. When you reach the country path that descends from the village of Odivelas, turn right and take a long path through croplands that take on different colours and shades depending on the time of year. Go slightly uphill to the place called "Serra" by the local inhabitants and from where, for many years, stone was extracted for use in the production of paving and ornamental stones. After passing the "Serra", when you see a traditional Alentejo hamlet (these are known as "montes" and this particular one is called Monte de Caneiras), turn left and, amongst the croplands, pass by a forest of cork oak trees of great beauty and natural interest. Pass by another old Alentejo hamlet and, at the fork, keep to the right and continue on until you reach the legendary EN2 national road, but without actually joining it. The route turns left here, on to a country path running alongside the national road. Amidst the farmland once again, pass by the cemetery, after which you should turn left and keep going until you reach the crossroads that you passed before. Turn right to pass by the new Odivelas well and go all the way up Rua do Poço (which means "Well Street"), turning into Rua do Sado at the end. This will bring you back to the garden where the route began.

POINTS OF INTEREST

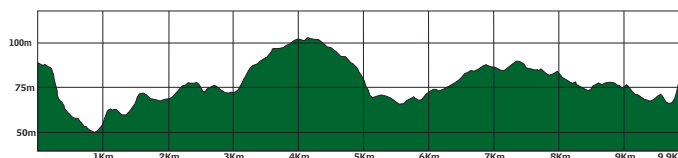
- 1 The Village of Odivelas
- 2 Traditional Olive Grove
- 3 Odivelas Quarry
- 4 Croplands
- 5 Cork Oak and Holm Oak
- 6 New Well and Wash House
- 7 Odivelas Baskets

DATA SHEET

Trail type: Loop
Distance: 9.9 km
Accumulated elevation: 150m
Duration: 3 to 3.5 hours
Difficulty: Medium(-)
Surface: Country paths
Season: All year

ALTITUDE GRAPH

Check the relationship between distance and altitude scales.



SIGNAGE



EMERGENCY

Emergency 112
Fire Alert 117
Environment 808 200 520
GNR SEPNA sepna@gnr.pt